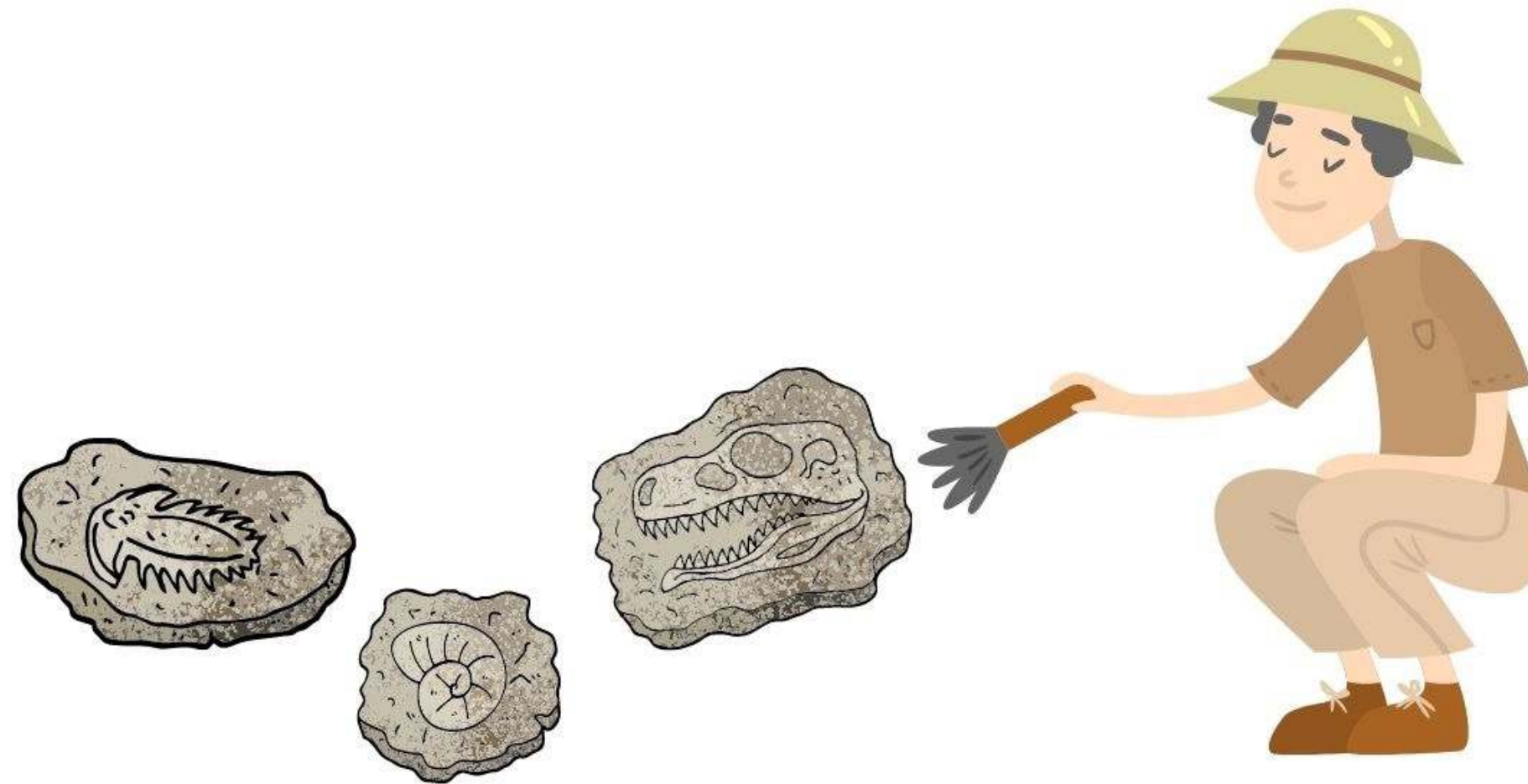


FOSSIL AND ARCHAEOLOGICAL FINDS

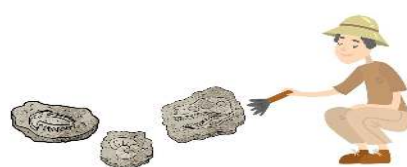


UNDER OUR FEET, DOWN UNDERGROUND THERE ARE PRECIOUS TESTIMONIES OF PREHISTORIC LIFE. THERE ARE

ARCHAEOLOGICAL FIND



FOSSIL



PALEONTOLOGIST O ARCHAEOLOGIST?

THE PERSON WHO STUDIES THE REMAINS OF ANCIENT ANIMALS AND PLANTS, THE TRACES OR IMPRESSIONS OF LIFE FROM PAST GEOLOGIC AGE IS



.....

THE PERSON WHO STUDIES PREHISTORIC PEOPLE AND THEIR CULTURES BY DIGGING UP AND ANALYSING ARTEFACT, INSCRIPTIONS ETC IS AN



.....

KEY VOCABULARY

ANCIENT- ANTICO

ARCHAEOLOGICAL FINDS-

RITROVAMENTI ARCHEOLOGICI

ARCHAEOLOGIST- ARCHEOLOGO

ARTEFACT- MANUFATTI

FOSSILS- FOSSILI

GEOLOGIC AGE-ERA GEOLOGICA-

PALEONTOLOGIST-PALEONTOLO

PREHISTORIC-PREISTORICO

TESTIMONY-TESTIMONIANZA

TRACE-TRACCIA

REMAINS-RESTI